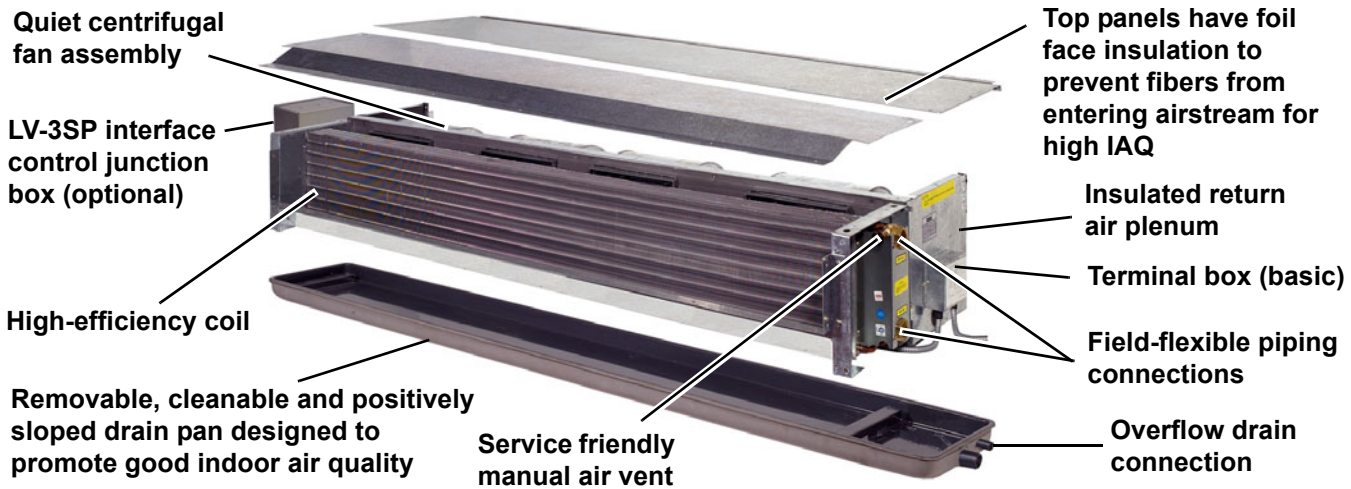


Model THC Ceiling Concealed Fan Coils—200 to 1200 cfm

- Compact, lightweight design conserves space
- Coil design provides good air mixing for high thermal efficiency
- High-efficiency centrifugal fan assembly minimizes vibration and noise
- Field-flexible design for easy, low cost installation
- Service-friendly design
- Full faced, insulated plenum with rear return
- 1" supply air duct collar, removable from both sides and bottom
- 1" throwaway filter
- Units available in stock
- ARI certified performance
- ETL and CETL safety agency approval listing

For more detail, refer to Catalog 700. For the most current information, refer to www.mcquay.com.

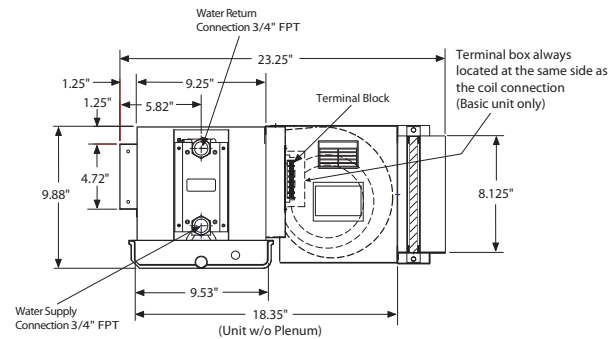
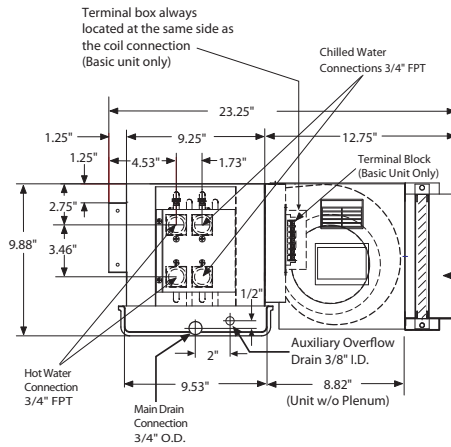
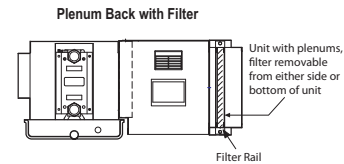
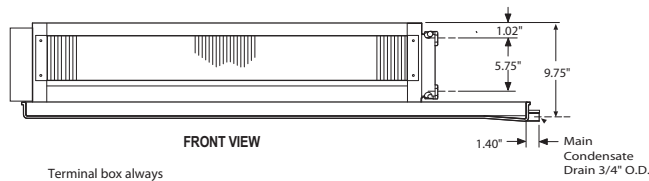
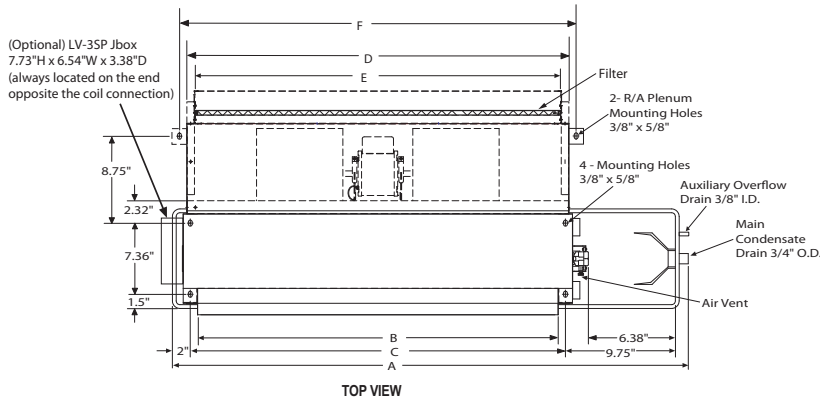


THC Fan Coils—Performance Data

Model	THCH02		THCH03		THCH04		THCH06		THCH08		THCH10		THCH12			
	2-pipe	4-pipe	2-pipe	4-pipe	2-pipe	4-pipe	2-pipe	4-pipe	2-pipe	4-pipe	2-pipe	4-pipe	2-pipe	4-pipe		
Air flow (cfm) ³	200		300		400		600		800		1000		1200			
ARI total cooling cap. (Btuh) ¹	8500		11,100		14,500		21,200		22,700		25,300		34,200			
ARI sensible clog. cap. (Btuh)	6100		8400		10,800		16,100		18,000		20,000		27,000			
ARI heating cap. (Btuh) ²	14,900	11,500	20,300	16,300	26,800	20,400	37,600	29,600	42,400	36,100	48,300	40,300	68,800	49,800		
Water flow—3-row (gpm)	1.94		2.51		3.26		4.70		5.14		5.70		7.75			
Water flow—1-row (gpm)	N/A	0.64	N/A	0.91	N/A	1.12	N/A	1.65	N/A	2.00	N/A	2.24	N/A	2.76		
Water PD—3-row (ft WC)	5.10		3.26		5.80		12.82		3.68		4.76		8.29			
Water PD—1-row (ft WC)	N/A	1.47	N/A	2.89	N/A	5.32	N/A	10.72	N/A	3.24	N/A	4.07	N/A	6.45		
Fan(s)	Type															
	Centrifugal fan (forward curved galvanized steel fan wheel)															
	Number	1		1		2		2		3		3		4		
Coil	Fan housing															
	Galvanized steel															
	Type															
Coil	Water															
	Type		3-row		3/1-row		3-row		3/1-row		3-row		3/1-row		3-row	
	Rows ⁴	3-row	3/1-row	3-row	3/1-row	3-row	3/1-row	3-row	3/1-row	3-row	3/1-row	3-row	3/1-row	3-row	3/1-row	
Motor(s)	Testing press.															
	425 psi for 1 minute; leak test: 225 psi for 5 minutes															
	Type															
Motor(s)	PSC															
	Number	1		1		1		1		2		2		2		
	Power supply	115/60/1, 208-230/50-60/1, 277/60/1														
Watts—high speed	50 Hz		62		91		109		171		242		321			
	60 Hz		75		109		131		205		291		385			
Coil connection	3/4" FPT															
Drain pipe	3/4" MPT															
Ship weight (lbs.) ⁵	61.00	63.00	69.00	73.00	83.00	88.00	97.00	102.00	127.00	134.00	137.00	143.00	146.00	153.00		

1. Conditions: Cooling capacity: Entering air temperature 80°F (OB), 67°F (WB); Entering water temperature 45°F, Leaving Water Temperature 55°F.
 2. Heating capacity: Entering air temperature 70°F (OB); Entering water temperature 140°F, the same amount of water flow as with cooling.
 3. Nominal air flow: Under dry coil conditions; Fan speed high.
 4. 3-Row = 3-row chilled water/hot water coil; 4-Row = 3-row chilled water, 1-row hot water coil.
 5. Weight includes return air plenum and packing.

Dimensional Data



Model	A	B	C	D	E	Number of Fans	Filters	
							Size ¹	Qty
THCH02	32.05"	17.64"	19.17"	19.96"	18.46"	1	18 1/8" x 8" x 1"	1
THCH03	38.74"	24.33"	25.87"	26.65"	25.15"	1	24 7/8" x 8" x 1"	1
THCH04	43.86"	29.45"	30.98"	31.77"	30.20"	2	29 7/8" x 8" x 1"	1
THCH06	51.73"	37.32"	38.86"	39.65"	38.07"	2	18 7/8" x 8" x 1"	2
THCH08	61.57"	47.17"	48.70"	49.49"	47.91"	3	23 3/4" x 8" x 1"	2
THCH10	65.51"	51.10"	52.64"	53.43"	51.85"	3	25 3/4" x 8" x 1"	2
THCH12	75.75"	61.34"	62.87"	63.66"	62.09"	4	30 7/8" x 8" x 1"	2

1. Dimensions based on unit with return air plenum and filter.

Available options:

- Two-pipe or four-pipe systems
- 120-volt valve packages
- Three-speed control switch
- Wall mounted, low and high-voltage thermostats
- A variety of factory and field installed valve packages
- Stainless steel drain pan with overflow drain connection
- Condensate overflow detection kits
- Transformers