

## ThinLine™ 3G Model FCVC, FCVH, and FCVS—Vertical Design—200 to 1200 cfm

- Seven unit sizes from 200 to 1200 cfm
- 2-pipe or 4-pipe configurations
- Heavy-gauge galvanized steel construction for longer life
- Fully concealed, exposed or recessed applications
- ARI certified performance
- ETL and CETL safety agency approval listing

For more detail, refer to Catalog 722.  
For the most current information, refer to [www.mcquay.com](http://www.mcquay.com).

### Multiple Control Options

- From 3-speed switch to DDC interface board
- Remote or unit mounted
- 3-speed or staged fan

### Multiple Configurations

- Flat Top
- Angled Top
- Hideaway
- Wall mounted

### Multiple Coil Options

- 2, 3, or 4-row main coil
- 1 or 2-row preheat or 1-row reheat coil
- Hot water or steam
- Same or opposite end connections

### Multiple Grille Options

- Stamped and multi-directional outlet grilles
- Return grille option

### Diverse, Flexible Valve & Piping Packages

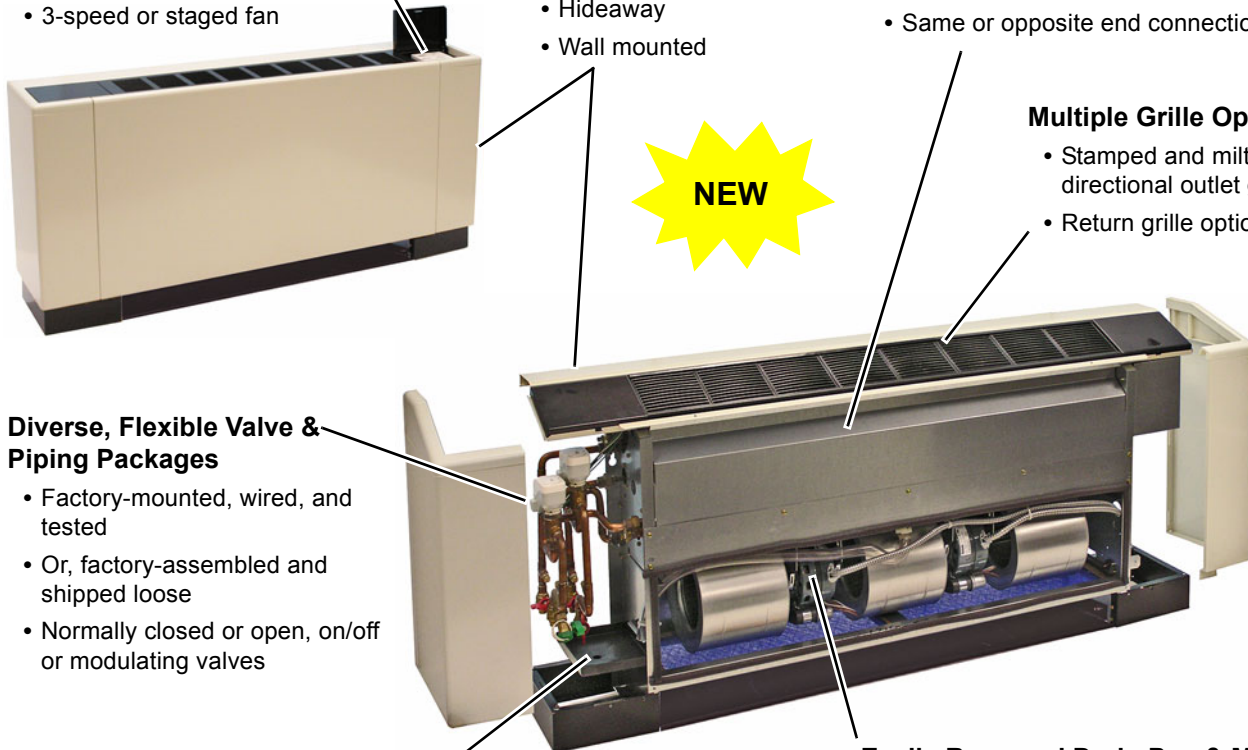
- Factory-mounted, wired, and tested
- Or, factory-assembled and shipped loose
- Normally closed or open, on/off or modulating valves

### Optional Secondary Drain Pan

- Noncorrosive
- Easily removed

### Easily Removed Drain Pan & Motor Assembly

- For easy maintenance and service
- Sloped, polymer drain pan for good IAQ



### Cooling and Heating Performance—Two-Pipe Systems

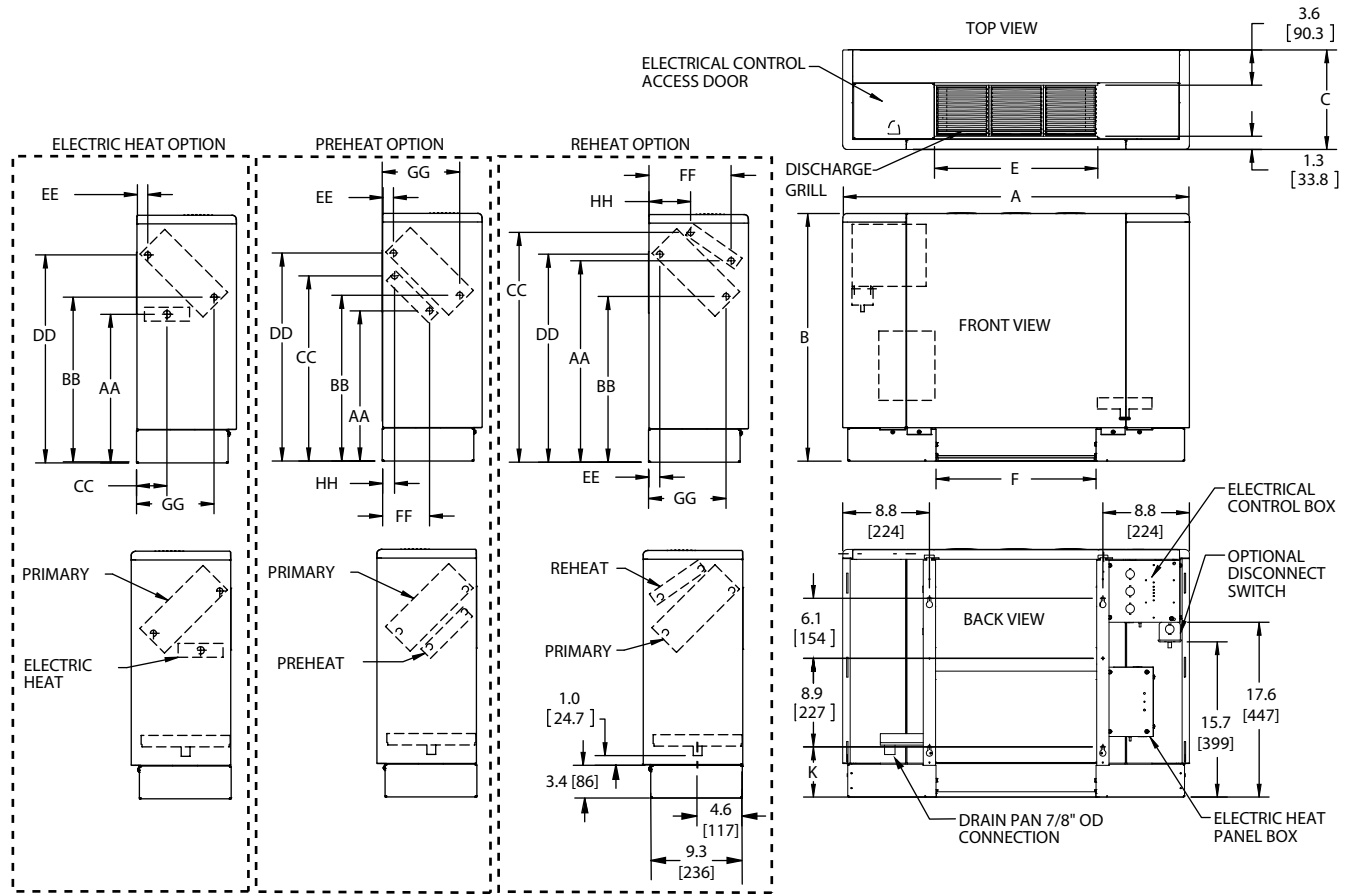
Unit Size	Main Coil Rows	SCFM	Cooling Performance				Heating Performance	
			Total TMBh (kW)	Sensible TMBh (kW)	Gpm (L/s)	WPD FtoH <sub>2</sub> O (kPa)	TMBh (TkW)	Gpm (L/s)
02	4 Row	200	5.9 (1.7)	4.7 (1.4)	1.2 (0.08)	0.6 (1.8)	19.2 (5.6)	1.2 (0.08)
03	4 Row	265	9.4 (2.8)	6.9 (2.0)	1.9 (0.12)	1.5 (4.5)	27.2 (8.0)	1.9 (0.12)
04	4 Row	374	14.3 (4.2)	10.2 (3.0)	2.9 (0.18)	3.4 (10.2)	38.9 (11.4)	2.9 (0.18)
06	4 Row	554	22.4 (6.6)	15.2 (4.5)	4.6 (0.29)	9.0 (26.9)	52.6 (15.4)	4.6 (0.29)
08	4 Row	634	26.4 (7.7)	17.8 (5.2)	5.5 (0.35)	14.8 (44.2)	64.3 (18.8)	5.5 (0.35)
10	4 Row	795	32.4 (9.5)	21.9 (6.4)	6.7 (0.42)	11.1 (33.2)	80.8 (23.7)	6.7 (0.42)
12	4 Row	1022	40.2 (11.8)	27.0 (7.9)	8.3 (0.52)	18.3 (54.7)	103.8 (30.4)	8.3 (0.52)

\* Rated in accordance with ARI Standard 440. Cooling performance is based on 80/67°F (27/19°C) entering air temperature, 45°F (7°C) entering chilled water temperature with a 10°F (5.5°C) ΔT. Heating performance is based on 70°F (21°C) entering air temperature, 180°F (82°C) entering hot water temperature with a 30°F (17°C) ΔT

\* Ratings shown are for 2-pipe systems with 4-row coil. For ratings with 4-pipe systems and other coil configurations, consult catalog 722.

# Fan Coils

## Performance Data—Unit Dimensions



Dimension		S02		S03		S04		S06		S08		S10		S12	
		inch	mm	inch	mm	inch	mm	inch	mm	inch	mm	inch	mm	inch	mm
Unit Width	A	35.0	889	40.5	1029	46.0	1168	57.0	1448	62.5	1588	73.5	1867	84.5	2146
Unit Height	B	25.0	635	25.0	635	25.0	635	25.0	635	25.0	635	25.0	635	25.0	635
Unit Depth	C	10.0	254	10.0	254	10.0	254	10.0	254	10.0	254	10.0	254	10.0	254
Discharge Grille - Width	E	16.3	414	21.8	554	27.3	693	38.3	973	43.8	1113	54.8	1392	65.8	1671
Return Air Opening - Width	F	16.2	411	21.7	551	27.2	691	38.2	970	43.7	1110	54.7	1389	65.7	1669
Primary Coil - Water Supply	BB	16.7	424	16.7	424	16.7	424	16.7	424	16.7	424	16.7	424	16.7	424
	GG	7.8	198	7.8	198	7.8	198	7.8	198	7.8	198	7.8	198	7.8	198
Primary Coil - Water Return	DD	21	533	21	533	21	533	21	533	21	533	21	533	21	533
	EE	1.1	28	1.1	28	1.1	28	1.1	28	1.1	28	1.1	28	1.1	28
Preheat Coil - Water Return	CC	18.7	475	18.7	475	18.7	475	18.7	475	18.7	475	18.7	475	18.7	475
	HH	1.2	30	1.2	30	1.2	30	1.2	30	1.2	30	1.2	30	1.2	30
Preheat Coil - Water Supply	AA	15	381	15	381	15	381	15	381	15	381	15	381	15	381
	FF	4.7	119	4.7	119	4.7	119	4.7	119	4.7	119	4.7	119	4.7	119
Reheat Coil - Water Return	CC	23.2	589	23.2	589	23.2	589	23.2	589	23.2	589	23.2	589	23.2	589
	HH	4.2	107	4.2	107	4.2	107	4.2	107	4.2	107	4.2	107	4.2	107
Reheat Coil - Water Supply	AA	20.3	516	20.3	516	20.3	516	20.3	516	20.3	516	20.3	516	20.3	516
	FF	8.3	211	8.3	211	8.3	211	8.3	211	8.3	211	8.3	211	8.3	211
Electric Heat Connection	AA	15.1	384	15.1	384	15.1	384	15.1	384	15.1	384	15.1	384	15.1	384
	CC	3.0	76	3.0	76	3.0	76	3.0	76	3.0	76	3.0	76	3.0	76