

MicroTech® III Remote User Interface

For McQuay Rooftop and Self-Contained Systems

How can I have remote access to my rooftop or indoor vertical self-contained unit controllers from one convenient location inside my building?

In addition to the unit-mounted user interface provided with MicroTech III controls, McQuay applied rooftop systems and indoor vertical self-contained systems can be equipped with a remote user interface that handles up to eight units per interface. The remote user interface provides convenient access to unit diagnostics and control adjustments, without having to access your roof or mechanical rooms located on each floor.

Each remote user interface offers the same functionality as its unit-mounted counterpart, including:

- Push-and-roll navigation wheel with an 8-line by 30-character display format.
- Digital display of messages in English language.
- All operating conditions, system alarms, control parameters and schedules are monitored.

Features

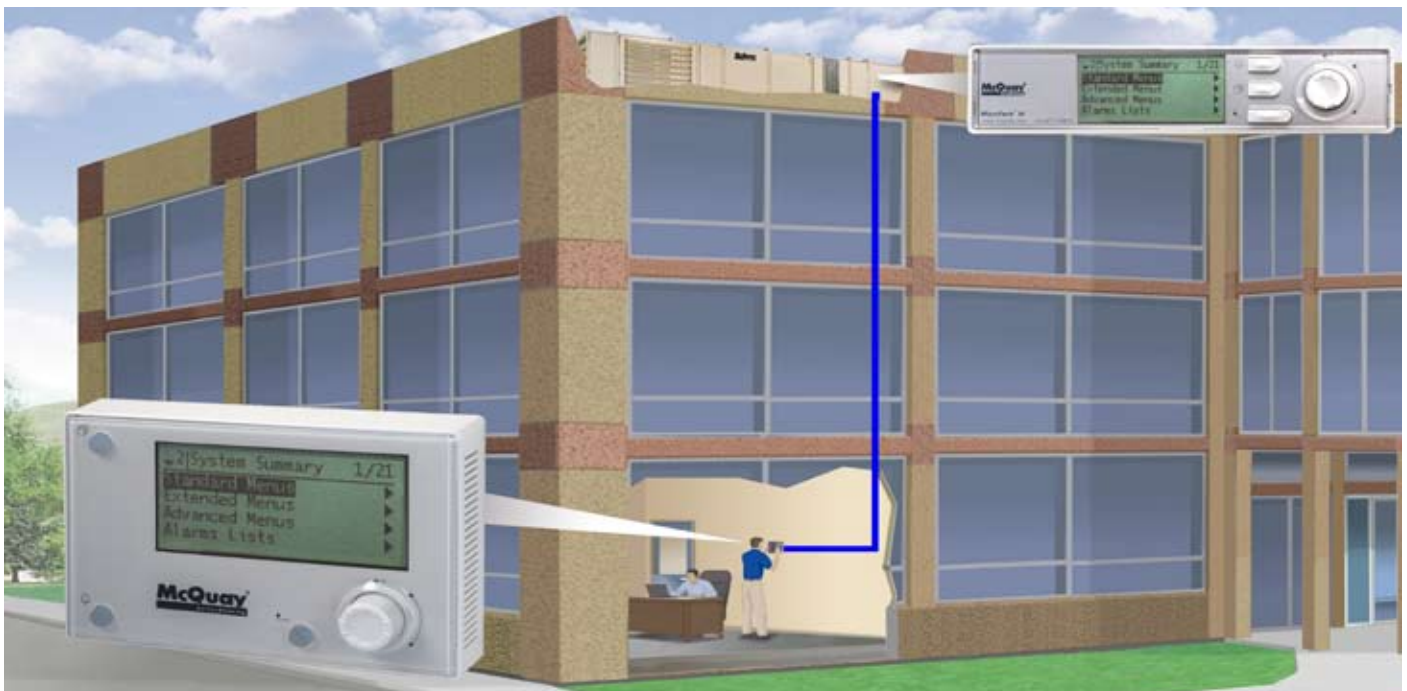
- Can be wired up to 700 meters from units for flexibility in placing each remote user interface within your building.
- Unit and remote user interfaces are both active.

Benefits

- Allows you to access the user interface for each unit from one location, inside the building.
- Users need to learn one format because the remote user interface is nearly identical to the unit-mounted version.
- No additional field commissioning is required for the remote user interface.

For More Information

For more information on the MicroTech III Remote User Interface, contact your local McQuay representative. To locate your representative, visit www.mcquay.com or call (800) 432-1342.





Technical Specifications

Interface

Process Bus	Up to eight interfaces per remote
Bus connection	CE+, CE-, not interchangeable
Terminal	2-screw connector
Max. length	700 m
Cable type	Twisted pair cable; 0.5...2.5 mm2

Display

LCD type	FSTN
Dimensions	5.7 W x 3.8 H x 1.5 D inches (144 x 96 x 38 mm)
Resolution	Dot-matrix 96 X 208 pixels
Backlight	Blue or white, user-configurable

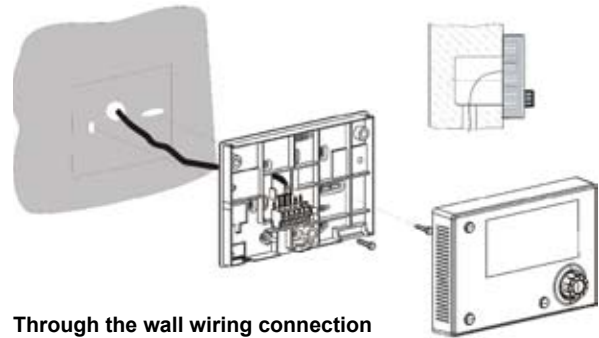
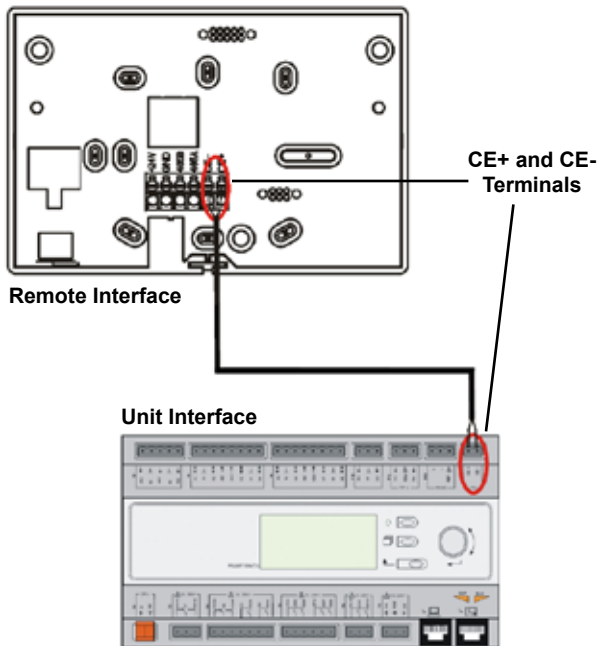
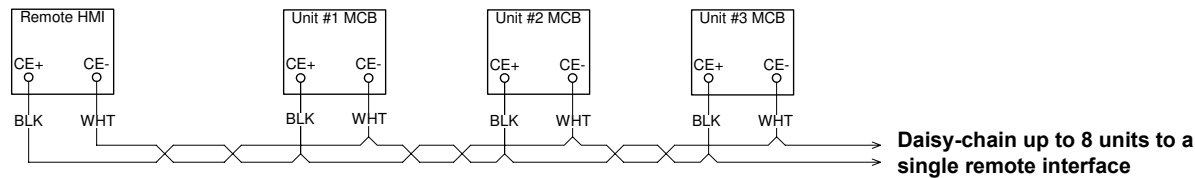
Environmental Conditions

Operation	IEC 721-3-3
Temperature	-40 to 70 °C
Restriction LCD	-20 to 60 °C
Humidity	<90% r.h. (no condensation)
Air pressure	Min. 700 hPa, corresponding to Max. 3,000 m above sea level

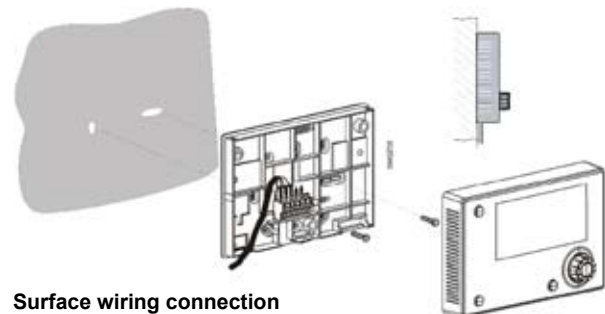


Cover Removal

Process Bus Wiring Connections



Through the wall wiring connection



Surface wiring connection

